

Flute

Region 13, 4A Junior High All-Region Band

Concert B \flat Scale

Musical notation for the Concert B \flat Scale, written in treble clef with a key signature of two flats (B \flat and E \flat). The scale is presented in an ascending and descending sequence, with a slur over the entire line.

Concert E \flat Scale

Musical notation for the Concert E \flat Scale, written in treble clef with a key signature of three flats (B \flat , E \flat , and A \flat). The scale is presented in an ascending and descending sequence, with a slur over the entire line.

Concert A \flat Scale

Musical notation for the Concert A \flat Scale, written in treble clef with a key signature of four flats (B \flat , E \flat , A \flat , and D \flat). The scale is presented in an ascending and descending sequence, with a slur over the entire line.

Concert D \flat Scale

Musical notation for the Concert D \flat Scale, written in treble clef with a key signature of five flats (B \flat , E \flat , A \flat , D \flat , and G \flat). The scale is presented in an ascending and descending sequence, with a slur over the entire line.

Concert F Scale

Musical notation for the Concert F Scale, written in treble clef with a key signature of one flat (B \flat). The scale is presented in an ascending and descending sequence, with a slur over the entire line.

Concert C Scale

Musical notation for the Concert C Scale, written in treble clef with a key signature of no sharps or flats. The scale is presented in an ascending and descending sequence, with a slur over the entire line.

Concert G Scale

Musical notation for the Concert G Scale, written in treble clef with a key signature of one sharp (F \sharp). The scale is presented in an ascending and descending sequence, with a slur over the entire line.

Chromatic Scale (slur all)

Musical notation for the Chromatic Scale, written in treble clef. The scale is presented in an ascending and descending sequence, with a slur over the entire line. The key signature changes from one sharp (F \sharp) to one flat (B \flat) during the descending sequence.

Oboe

Region 13, 4A Junior High All-Region Band

Concert B \flat Scale

Musical notation for the Concert B \flat Scale, written in treble clef with a key signature of two flats (B \flat and E \flat). The scale is presented in an ascending and descending sequence, with a slur over the entire phrase.

Concert E \flat Scale

Musical notation for the Concert E \flat Scale, written in treble clef with a key signature of three flats (B \flat , E \flat , and A \flat). The scale is presented in an ascending and descending sequence, with a slur over the entire phrase.

Concert A \flat Scale

Musical notation for the Concert A \flat Scale, written in treble clef with a key signature of three flats (B \flat , E \flat , and A \flat). The scale is presented in an ascending and descending sequence, with a slur over the entire phrase.

Concert D \flat Scale

Musical notation for the Concert D \flat Scale, written in treble clef with a key signature of four flats (B \flat , E \flat , A \flat , and D \flat). The scale is presented in an ascending and descending sequence, with a slur over the entire phrase.

Concert F Scale

Musical notation for the Concert F Scale, written in treble clef with a key signature of one flat (F \flat). The scale is presented in an ascending and descending sequence, with a slur over the entire phrase.

Concert C Scale

Musical notation for the Concert C Scale, written in treble clef with a key signature of no sharps or flats (C). The scale is presented in an ascending and descending sequence, with a slur over the entire phrase.

Concert G Scale

Musical notation for the Concert G Scale, written in treble clef with a key signature of one sharp (F \sharp). The scale is presented in an ascending and descending sequence, with a slur over the entire phrase.

Chromatic Scale (slur all)

Musical notation for the Chromatic Scale (slur all), written in treble clef. The first line shows the ascending chromatic scale from C4 to C5, with a slur over the entire phrase.

Musical notation for the Chromatic Scale (slur all), written in treble clef. The second line shows the descending chromatic scale from C5 to C4, with a slur over the entire phrase.

Clarinet

Region 13, 4A Junior High All-Region Band

Concert B \flat (C) Scale



Concert E \flat (F) Scale



Concert A \flat (B \flat) Scale



Concert D \flat (E \flat) Scale



Concert F (G) Scale



Concert C (D) Scale



Concert G (A) Scale



Chromatic Scale (slur all)



Region 13, 4A Junior High All-Region Band

Bass Clarinet

Concert B \flat (C) Scale



Concert E \flat (F) Scale



Concert A \flat (B \flat) Scale



Concert D \flat (E \flat) Scale



Concert F (G) Scale



Concert C (D) Scale



Concert G (A) Scale



Chromatic Scale (slur all)



Bassoon **Region 13, 4A Junior High All-Region Band**

Concert B \flat Scale

Musical notation for the Concert B \flat Scale, written in bass clef with a key signature of two flats (B \flat and E \flat). The scale is presented in two lines: an ascending line and a descending line, both slurred together. The piece concludes with a whole note rest.

Concert E \flat Scale

Musical notation for the Concert E \flat Scale, written in bass clef with a key signature of three flats (B \flat , E \flat , and A \flat). The scale is presented in two lines: an ascending line and a descending line, both slurred together. The piece concludes with a whole note rest.

Concert A \flat Scale

Musical notation for the Concert A \flat Scale, written in bass clef with a key signature of three flats (B \flat , E \flat , and A \flat). The scale is presented in two lines: an ascending line and a descending line, both slurred together. The piece concludes with a whole note rest.

Concert D \flat Scale

Musical notation for the Concert D \flat Scale, written in bass clef with a key signature of four flats (B \flat , E \flat , A \flat , and D \flat). The scale is presented in two lines: an ascending line and a descending line, both slurred together. The piece concludes with a whole note rest.

Concert F Scale

Musical notation for the Concert F Scale, written in bass clef with a key signature of one flat (B \flat). The scale is presented in two lines: an ascending line and a descending line, both slurred together. The piece concludes with a whole note rest.

Concert C Scale

Musical notation for the Concert C Scale, written in bass clef with a key signature of no sharps or flats. The scale is presented in two lines: an ascending line and a descending line, both slurred together. The piece concludes with a whole note rest.

Concert G Scale

Musical notation for the Concert G Scale, written in bass clef with a key signature of one sharp (F \sharp). The scale is presented in two lines: an ascending line and a descending line, both slurred together. The piece concludes with a whole note rest.

Chromatic Scale (slur all)

Musical notation for the Chromatic Scale, written in bass clef with a key signature of no sharps or flats. The scale is presented in two lines: an ascending line and a descending line, both slurred together. The piece concludes with a whole note rest.

Region 13, 4A Junior High All-Region Band Scales

Alto Saxophone

Bari Saxophone

Concert B \flat (G) Scale



Concert E \flat (C) Scale



Concert A \flat (F) Scale



Concert D \flat (B \flat) Scale



Concert F (D) Scale



Concert C (A) Scale



Concert G (E) Scale



Chromatic Scale (slur all)



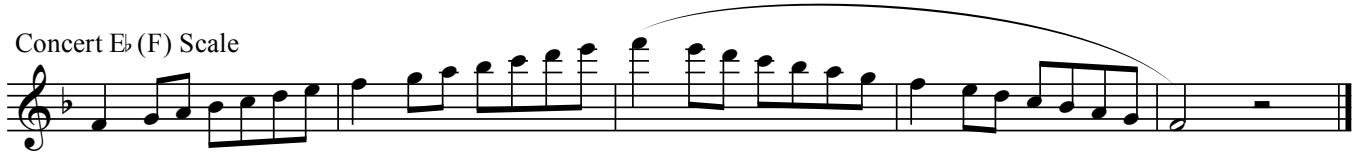
Region 13, 4A Junior High All-Region Band

Tenor Saxophone

Concert B \flat (C) Scale



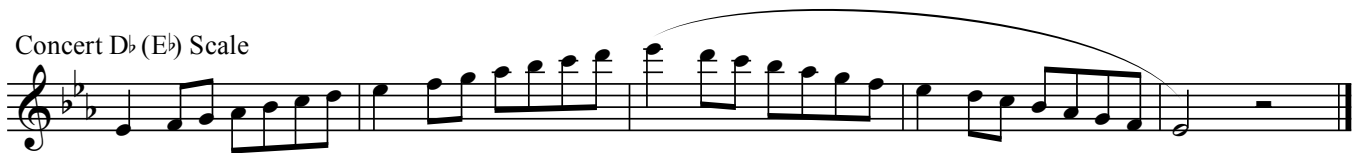
Concert E \flat (F) Scale



Concert A \flat (B \flat) Scale



Concert D \flat (E \flat) Scale



Concert F (G) Scale



Concert C (D) Scale



Concert G (A) Scale



Chromatic Scale (slur all)



Trumpet

Region 13, 4A Junior High All-Region Band

Concert B \flat (C) Scale

Musical notation for the Concert B \flat (C) Scale. It consists of a single staff with a treble clef and a key signature of one flat. The scale is written in eighth notes, starting on middle C and ascending to the next C. A slur covers the entire scale.

Concert E \flat (F) Scale

Musical notation for the Concert E \flat (F) Scale. It consists of a single staff with a treble clef and a key signature of two flats. The scale is written in eighth notes, starting on F and ascending to the next F. A slur covers the entire scale.

Concert A \flat (B \flat) Scale

Musical notation for the Concert A \flat (B \flat) Scale. It consists of a single staff with a treble clef and a key signature of two flats. The scale is written in eighth notes, starting on B \flat and ascending to the next B \flat . A slur covers the entire scale.

Concert D \flat (E \flat) Scale

Musical notation for the Concert D \flat (E \flat) Scale. It consists of a single staff with a treble clef and a key signature of three flats. The scale is written in eighth notes, starting on E \flat and ascending to the next E \flat . A slur covers the entire scale.

Concert F (G) Scale

Musical notation for the Concert F (G) Scale. It consists of a single staff with a treble clef and a key signature of one sharp. The scale is written in eighth notes, starting on G and ascending to the next G. A slur covers the entire scale.

Concert C (D) Scale

Musical notation for the Concert C (D) Scale. It consists of a single staff with a treble clef and a key signature of two sharps. The scale is written in eighth notes, starting on D and ascending to the next D. A slur covers the entire scale.

Concert G (A) Scale

Musical notation for the Concert G (A) Scale. It consists of a single staff with a treble clef and a key signature of three sharps. The scale is written in eighth notes, starting on A and ascending to the next A. A slur covers the entire scale.

Chromatic Scale (slur all)

Musical notation for the Chromatic Scale (slur all). It consists of a single staff with a treble clef and a key signature of one sharp. The scale is written in eighth notes, starting on G and ascending chromatically to the next G. A slur covers the entire scale.

Musical notation for the Chromatic Scale (slur all). It consists of a single staff with a treble clef and a key signature of two flats. The scale is written in eighth notes, starting on F and descending chromatically to the next F. A slur covers the entire scale.

Horn

Region 13, 4A Junior High All-Region Band

Concert B \flat (F) Scale



Concert E \flat (B \flat) Scale



Concert A \flat (E \flat) Scale



Concert D \flat (A \flat) Scale



Concert F (C) Scale



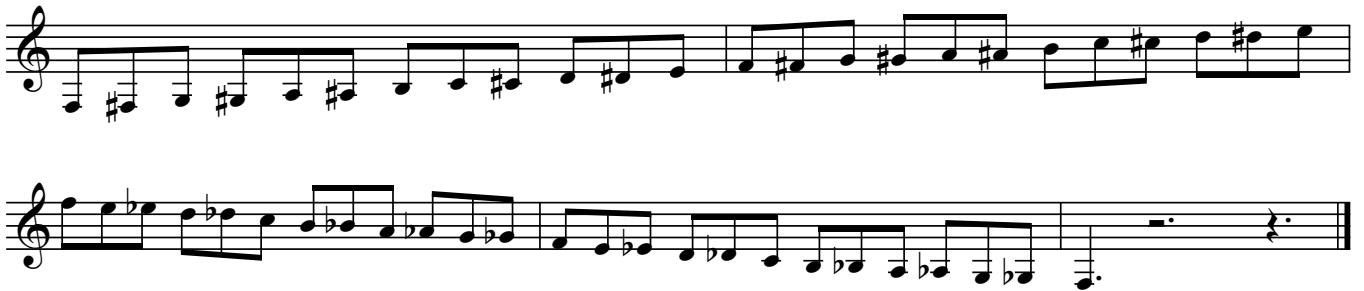
Concert C (G) Scale



Concert G (D) Scale



Chromatic Scale (slur all)



Trombone **Region 13, 4A Junior High All-Region Band**

Concert B \flat Scale

Musical notation for the Concert B \flat Scale, written in bass clef with a key signature of two flats (B \flat and E \flat). The scale is presented in two directions: ascending and descending, with a fermata over the final note.

Concert E \flat Scale

Musical notation for the Concert E \flat Scale, written in bass clef with a key signature of three flats (B \flat , E \flat , and A \flat). The scale is presented in two directions: ascending and descending, with a fermata over the final note.

Concert A \flat Scale

Musical notation for the Concert A \flat Scale, written in bass clef with a key signature of three flats (B \flat , E \flat , and A \flat). The scale is presented in two directions: ascending and descending, with a fermata over the final note.

Concert D \flat Scale

Musical notation for the Concert D \flat Scale, written in bass clef with a key signature of four flats (B \flat , E \flat , A \flat , and D \flat). The scale is presented in two directions: ascending and descending, with a fermata over the final note.

Concert F Scale

Musical notation for the Concert F Scale, written in bass clef with a key signature of one flat (B \flat). The scale is presented in two directions: ascending and descending, with a fermata over the final note.

Concert C Scale

Musical notation for the Concert C Scale, written in bass clef with a key signature of no sharps or flats. The scale is presented in two directions: ascending and descending, with a fermata over the final note.

Concert G Scale

Musical notation for the Concert G Scale, written in bass clef with a key signature of one sharp (F \sharp). The scale is presented in two directions: ascending and descending, with a fermata over the final note.

Chromatic Scale (legato tongue all)

Musical notation for the Chromatic Scale, written in bass clef with a key signature of no sharps or flats. The scale is presented in two directions: ascending and descending, with a fermata over the final note. The instruction "(legato tongue all)" is written above the staff.

Region 13, 4A Junior High All-Region Band

Euphonium

Concert B \flat Scale



Concert E \flat Scale



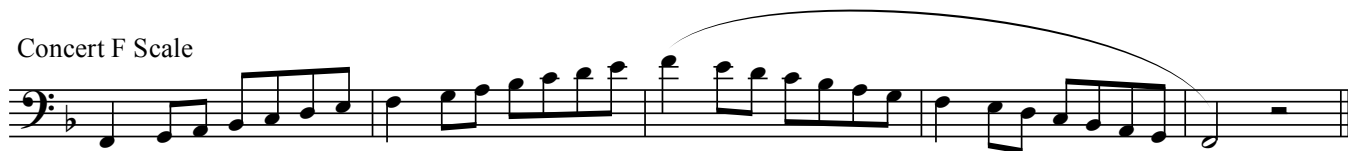
Concert A \flat Scale



Concert D \flat Scale



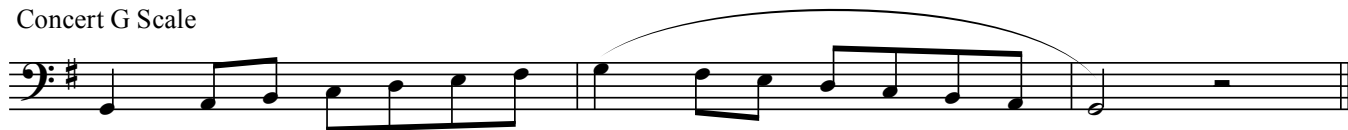
Concert F Scale



Concert C Scale



Concert G Scale



Chromatic Scale (slur all)



Tuba

Region 13, 4A Junior High All-Region Band

Concert B \flat Scale

Musical notation for the Concert B \flat Scale. The scale is written in bass clef with a key signature of two flats (B \flat and E \flat). It consists of two lines of music. The first line contains the first eight notes of the scale: B \flat , C, D, E \flat , F, G, A, B \flat . The second line contains the final two notes: C and B \flat . A slur is placed over the notes from the second measure to the eighth measure.

Concert E \flat Scale

Musical notation for the Concert E \flat Scale. The scale is written in bass clef with a key signature of three flats (B \flat , E \flat , and A \flat). It consists of two lines of music. The first line contains the first eight notes: E \flat , F, G, A \flat , B \flat , C, D, E \flat . The second line contains the final two notes: F and E \flat . A slur is placed over the notes from the second measure to the eighth measure.

Concert A \flat Scale

Musical notation for the Concert A \flat Scale. The scale is written in bass clef with a key signature of three flats (B \flat , E \flat , and A \flat). It consists of two lines of music. The first line contains the first eight notes: A \flat , B \flat , C, D, E \flat , F, G, A \flat . The second line contains the final two notes: B \flat and A \flat . A slur is placed over the notes from the second measure to the eighth measure.

Concert D \flat Scale

Musical notation for the Concert D \flat Scale. The scale is written in bass clef with a key signature of four flats (B \flat , E \flat , A \flat , and D \flat). It consists of two lines of music. The first line contains the first eight notes: D \flat , E \flat , F, G, A \flat , B \flat , C, D \flat . The second line contains the final two notes: E \flat and D \flat . A slur is placed over the notes from the second measure to the eighth measure.

Concert F Scale

Musical notation for the Concert F Scale. The scale is written in bass clef with a key signature of one flat (F). It consists of two lines of music. The first line contains the first eight notes: F, G, A, B, C, D, E, F. The second line contains the final two notes: G and F. A slur is placed over the notes from the second measure to the eighth measure.

Concert C Scale

Musical notation for the Concert C Scale. The scale is written in bass clef with a key signature of no sharps or flats (C). It consists of two lines of music. The first line contains the first eight notes: C, D, E, F, G, A, B, C. The second line contains the final two notes: D and C. A slur is placed over the notes from the second measure to the eighth measure.

Concert G Scale

Musical notation for the Concert G Scale. The scale is written in bass clef with a key signature of one sharp (F#). It consists of two lines of music. The first line contains the first eight notes: G, A, B, C, D, E, F#, G. The second line contains the final two notes: A and G. A slur is placed over the notes from the second measure to the eighth measure.

Chromatic Scale (slur all)

Musical notation for the Chromatic Scale (slur all) - Ascending. The scale is written in bass clef. It consists of two lines of music. The first line contains the first eight notes: C, C#, D, D#, E, E#, F, F#. The second line contains the final two notes: G, G#. A slur is placed over the entire scale.

Musical notation for the Chromatic Scale (slur all) - Descending. The scale is written in bass clef. It consists of two lines of music. The first line contains the first eight notes: G, F#, F, E#, E, D#, D, C#. The second line contains the final two notes: C, B. A slur is placed over the entire scale.

Marimba **Region 13, 4A Junior High All-Region Band**

Concert B \flat Scale



Concert E \flat Scale



Concert A \flat Scale



Concert D \flat Scale



Concert F Scale



Concert C Scale



Concert G Scale



Chromatic Scale

